



Friends of Cypress Provincial Park Society
P.O. Box 91053, West Vancouver, B.C. V7V 3N3
www.Cypresspark.ca

Winter/Spring 2021/22 Newsletter



With a spectacular start to the snow season in mid-December, the traffic to Cypress Provincial Park was intense from 7:30 AM and continuing until the early evening. Parking for pass holders and for those wishing to pay for parking in the pay parking area near Black Mountain Lodge was at a premium. Those who did not wish to pay for parking, principally backcountry skiers and snowshoers, could park, without paying, in parking lot 3 B, and walk the approximately 600 m into the Black Mt Lodge to access the Backcountry Access Tags. The Backcountry Access Tags are available only in the Black Mountain Lodge Brown Bag Room. A ticket machine is available in the Brown Bag Room for those who wish to pay

for day or partial day parking. We are pleased to announce that the Brown Bag Room was heated. Temperatures were cold, as you will remember.

Questions were directed to members of the FCPP Board this winter about pay parking requirements for those accessing the Hollyburn Hikers Access Trailhead. Pay parking is allowed under the Ski Area's Park Use permit 1506, but only within the ski operation's Controlled Recreation Area Boundary. The Hollyburn Hikers Access Trailhead was created as a trail access with legal standing outside the Controlled Recreation Area (CRA) in 1986. Vehicles parking north of the trailhead on either side of the road, are also outside the CRA and thus not liable to a parking charge. This distinction may not always be clear to staff new to the ski hill. Of course, if all parking spots on both sides of the road are taken, parking is available at Lot 3B (which is also outside the CRA—which is why it is free). It's a 1,000-m walk to the Hollyburn Hikers Access Trail head.



BC Parks News

Sam Stickney, now a year into his position as Area Supervisor for the South Coast Region, has forwarded the following:

The Vancouver Area Ranger team is currently comprised of:

Sam Stickney – Area Supervisor

Simon Debisschop – Senior Park Ranger

Gareth Wheatley – Senior Park Ranger

Sarah Town – Auxiliary Park Ranger

Curtis Ripmeester – Auxiliary Park Ranger

Eli Simcoe-Metcalf – Auxiliary Park Ranger

Gareth Wheatley, who has been working with BC Parks since 2015, recently accepted a full-time Senior Park Ranger position in the Vancouver Area (he had been acting in the position for almost two years).

Erin Rutherford ended her tenure with BC Parks in Dec 2021 to take on a new role with In-lailawatash, an environmental consulting firm associated with the Tsleil-Waututh First Nation.

Elyse Curley will not be returning as expected. Instead she will be taking a temporary job with parks at the ministry level, and Jennifer Kardynal will maintain her position as Community Liaison Officer.

Continuing, Sam provided some thoughts on the past year:

- The Vancouver area has seen incredible visitation numbers and associated visitor management challenges over the past year
- We've had some great success with implementing the Discover Park Ambassador Program, with the help of our Park Operators and the BC Parks Foundation
- With new capital investment money announced for BC Parks, we've been busy evaluating projects/plans for where and how to spend the money within the South Coast Region
- The Vancouver team will continue, in 2022, to make progress at Cypress on trail maintenance and signage, as well improvements on the Yew Lake loop, Hollyburn and the HSCT.

FCPP Board and members welcomes Gareth Wheatley as full-time Senior Park Ranger. We wish Erin Rutherford well in her new position and we look forward to working again with Jennifer Kardynal.

We recognize and acknowledge the extent of the area the Area Supervisor and staff are responsible for. The South Coast region includes the three lower mainland Provincial Parks: Cypress, Seymour and Pinecone Burke; Peace Arch Park, and the Marine Parks of Hacklett Bay on Gambier Island and Plumper Cove on Keats.

Cypress Mountain Resort News

Reports from Russell Chamberlain CEO Of Cypress Mountain Resort 2021/22 Winter Season

- It has been another solid year of snowpack for Park visitors.
- No major infrastructure damage within the CRA.

- The colder temps have caused some issues on the Highway (potholes, cracks, and road shoulder deterioration).
- Hopefully there is sunshine in the middle of March for all the families looking for recreational activities.

2022/23 Summer Plans

- The Outdoor Patio construction will re-commence from the middle of April and scheduled completion is June 30, 2022. We will fence off the area and provide signage to guide Park visitors to designated hiking trails.
- Mountain Coaster will operate from approximately June to the end of September. We will start pushing snow in the middle of April and re-install the Coaster beginning in May.
- We will have our usual proactive summer maintenance program for our facilities and ski trails.
- We will continue to import soil into the Nordic Area (work we started last summer). All soil is tested prior to import via Satori Environmental.

2022/23 FCPP Trail Projects

The materials are still on site to complete the boardwalk and other improvements on the 680m. section of the Black Mountain Loop trail on Black Mountain Plateau, however we still have some mapping and planning documentation to complete before the spring. This trail section runs from Sam & Theagill Lakes Southwest to the junction with the Baden-Powell Trail, and considerable preliminary work has already been done, prior to putting the yellow cedar boardwalk in place, with a crew from well-known trail builder Ted Tempany of Squamish. The long-term plan is to upgrade all of the (increasingly) popular hiking trails to the various viewpoints on the Black Mountain plateau over the next several years. We also are preparing to fund a Student Ranger training project, supervised by Ranger Simon Debisschop, to install sturdy steps this summer at a safe detour around the 'missing ledge' on Hollyburn Peak, as part of measures to deal with that long-standing and serious hazard. It is worth noting that other hiking groups have recently put forward their own possible solutions for the ledge to BC Parks (bolting on a metal ledge, installing a chain, etc.), as this dangerous situation on Hollyburn, high up on a summit hike popular with seniors hiking groups and families with kids has resisted several repair attempts - over the last 30 years!

The Howe Sound Crest Trail upgrade is now a BC Parks capital project managed by Ron Goldstone of the BC Parks Squamish Office, and work continued in dry and difficult conditions last summer by Jeremy Power and his crew. They installed steps on a steep rooty section (despite the ground turning to dust underfoot) and then a section of boardwalk on the approach to Saint Marks Summit, - where they likely still have several years of work to complete the project to this extremely & increasingly popular Viewpoint.

FCPP Maps

Ongoing thanks to Mike Castle for his tireless work on the Cypress Provincial Park Summer Hiking Map.

In late spring the maps will again be available in the Park's kiosks and will undoubtedly be handed out by FCCP members to confused hikers who are taking the route to Bowen Lookout when they intended to head for Black Mountain. The electronic device in the hand is frequently not as useful as the map! The map is now available electronically on the FCPP website and the Cypress Mountain Ski Hill's Website.

An Environmental Battle Fought—and Won!

Gail Ross

A recent battle fought and won was the saving of the Donut Hole, a 5,800-hectare “hole” in provincial park protection between E.C. Manning and Skagit Valley Provincial Park.

The Province has now entered into a Memorandum of Agreement that will see Imperial Metals return to the province all mining and related rights within the hole.

The Agreement will ensure the preservation and protection of the natural and cultural resources, as well as recreational opportunities within the headwaters of the internationally significant Skagit River.

Many individuals, organizations and Indigenous peoples were involved in this effort to save the donut.

One of the champions involved in the effort to save the Donut was the recently deceased Ken Farquharson.

FCPP gave tribute to Ken in our 2022 Fall Newsletter. Ken was an activist. It was in the '60s when he got involved in environmental issues in the Skagit and in environmental issues in Cypress Bowl. A private ski development was proposed for the Bowl. Logging was undertaken that was greatly in excess of the initial proposal. Ken was instrumental in having the logging stopped.

Saving Cypress Bowl from rapacious logging was an early battle fought by Ken - and won. Unfortunately, he died before he could know for sure that the Donut Hole was saved.

Memorial to Paul Berlinguette

Paul's sudden and unexpected death was reported in the FCPP Winter/Spring Newsletter 2020/21. Paul died on March 9, 2021 at the young age of 64. Paul was moving force in many environmental organizations on the North Shore and a strong supporter of Friends of Cypress Provincial Park in word and in deed.

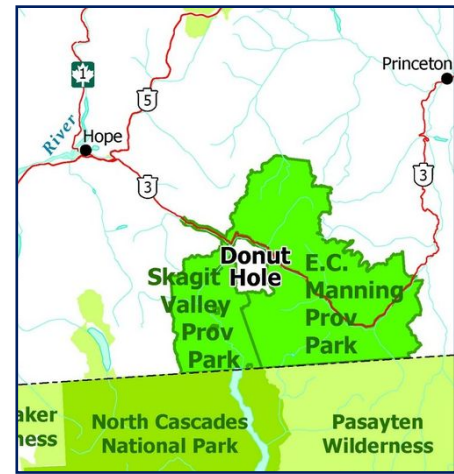
As of May 2021, FCPP had received \$2,125 donated in Paul's name.

Discussion among the directors ensued about the best way to honour Paul so that his legacy as trail builder and trail maintainer would not be lost.

Paul and his partner Fiona Wright were the Trail Watchers for the Lost Lake trail, and the Directors agreed that a significant place for a memorial to Paul would be at Lost Lake. Paul and Fiona had done much over the years to improve the trail access. It is not always an easy trail to access as a hiker, and certainly presents challenges in terms of maintenance and improvements. The FCPP Board members agreed that they would like to work with Fiona to bring about ongoing improvements to the trail and perhaps install a bench near the lake in memory of Paul.

An alternative project under consideration and to be discussed with Fiona would be a new picnic table at Blue Gentian Lake. The Blue Gentian Lake Trail is another trail that Paul and Fiona had worked on as recently as in the fall of 2020. The current picnic table at Blue Gentian lake is sinking into the ground. A new table is needed. A new table could be considered as a fitting tribute to Paul.

Both options will be discussed further with Fiona and of course with Parks, and a decision made during 2023.



Louise Irwin

Louise Irwin, a loyal and enthusiastic supporter of Cypress Provincial Park, died on January 6, 2022. She was 94. Louise lived an active and interesting life. She was a teacher, later a librarian, a hiker, a great lover of the outdoors, an enthusiastic member of and generous donor to the Vancouver Natural History Society, and to Friends of Cypress Provincial Park.

In fact, it was Louise Irwin who funded the first run of the Cypress Provincial Hiking Map in 2011. That generous donation was followed by other significant donations up to 2016. Mike Castle, former Treasurer of FCPP, forwarded the following: "Together with the contributions from Cypress Mountain and the Park Enhancement Fund the combination of these funds provided full funding for all three Editions of the printed map (2013, 2014, 2018) – a total of 100,000 maps - and also the Digital version in 2020". Louise Irwin, a generous donor indeed.



Many are the anecdotes about Louise from Nature Vancouver (formerly Vancouver Natural History Society) and the Natural History Camps she attended regularly, from the North Shore Hikers and from Friends of Cypress Provincial Park Society.

For many years Louise was the trail watch monitor for Blue Gentian Lake. Armed with her clippers, her secateurs, the necessary bag for garbage collection, Louise hiked to Blue Gentian Lake at beginning of the season to clip back obtrusive bushes on the trail, to take note of winter damage, to pick up garbage and to observe the early indications of spring flowering. She went again in midsummer and again in the fall. She wore shorts whatever the weather. And it was well known that she liked to do that duty alone.

Cynthia Crampton, a friend and a fellow FCPP member, asked Louise, on one occasion, if she could possibly join her. Both Cynthia and Louise remembered the occasion well.

Cynthia writes: "On June 11th 2014, as spring had arrived early on Hollyburn Mountain, we set off on a sunny day. We arrived at Blue Gentian Lake, and Louise started on her checking. I was walking on the boardwalk, when a young black bear came on to the trail. He jumped in the lake, and proceeded to dive and pull up some of the numerous yellow pond lilies (*Nuphar polysepalum*), our native water lily. He tossed them around playfully, totally ignoring the humans, the two of us, on the boardwalk. He dipped down several times in the lake, each time coming up with a muzzle full of lily roots. As he could have presumably avoided them if he had wanted to, it seemed to us that his move was deliberate, and that he was eating them. He was in the lake for a good 20 minutes, before clambering out towards Brothers Creek.

I had seen a swimming bear before, and it surprised me that Louise, for all of her many times in nature, had never seen a bear swim. It was a gala day for both of us. Unfortunately, we had clippers and secateurs, but no camera"!

And on another trail clearing occasion in 2006, a park ranger, fortuitously, took a photo of a FCPP trail clearing crew on the Pumphouse Road. How important is that photo. Louise Irwin is standing next to Katharine Steig, Katharine is next to Eva Nagy. And then there are the four men holding their cookie treats in their hands. From the right we have Norm Purcell, then Halvor Lunden, then Bob Holden in the red jacket standing next to Alan Banwell. All in the photo were, and some are still, outstanding supporters of Cypress Provincial Park.



Halvor Lunden, builder of trails, staunch and generous supporter of FCPP, died 2 years later, in 2008.

Eva Nagy has commented, with some sadness, that she and Katharine Steig are now the only ones from that photo even “minimally” on the trails.

In our Winter-Spring newsletter last year we mourned the loss of two long term and active members Irene Miller and Paul Berlinguette. And now this year we are mourning another - Louise Irwin.

Our members are ageing. We need new and enthusiastic young people. Another way to honour those who have passed away is to keep our Society vibrant. Dare I say-please recruit!!!

To further celebrate Louise a link is attached to an article Louise wrote for the Natural History Magazine **Discovery**.

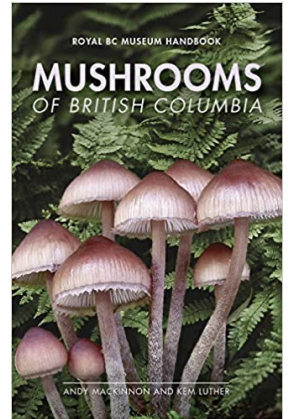
Louise’s love of nature ran deep, and she transmitted that love to all who knew and hiked with her. Another stalwart member of Friends of Cypress, Louise will be sadly missed, and long remembered.

MUSHROOMS OF BRITISH COLUMBIA

Royal BC Museum Handbook 2021 by Andy MacKinnon and Kem Luther

a book review by our own mushroom expert- Anne Leathem

This new book on fungi is a wonderful addition to the identification and enjoyment of the mushrooms of our province. It is written by two so very knowledgeable mycologists who have many kilometers on their boots from roaming the forests, mountains, beaches, meadows and semideserts of this province. The book is friendly to beginners and seasoned 'shroomers' alike; the language is simple and yet is detailed enough to make identification of samples possible for all. Common names are used for easy identification and for the more experienced user the most recent Latin names are used in keeping with the ongoing DNA studies showing relationships between often very different looking species. Before this book was printed our main references were from the USA and based on the western states Washington, Oregon, northern California, or on the whole of the continent. This is the first coloured guide book encompassing fungi of British Columbia. Our own Vancouver mushroom guru Paul Kroeger had a hand in editing and proof-reading the detailed fungal descriptions of the book and the added special essays.



As many of you have learned lately, mushrooms are only the fruiting bodies of large underground networks of mycorrhizae or 'roots' of the fungi. Fungi have so many jobs: breaking down organic matter to return nutrients to the soil, delivering water, minerals, and other nutrients to many trees and other plants, and also connecting trees to their offspring and neighbours via these mycelia.

The Introduction section leads the reader through many steps to learn about fungi and how to become fluent in this fascinating past-time. There is detail on the many shapes of mushrooms, their colours, gill-types, ecology, habitat, edibility and more. Of great use is the Guide to Mushroom Groups; this section complete with line drawings shows the many basic shapes and groups of mushrooms and is a good head start to identification. You are guided to the specific group to start your investigation. The species and photos are arranged according to similarity in appearances rather than alphabetically by genus name so the user can go straight to the section where their specimen is most likely to be seen.

The authors have chosen carefully selected main entries for 350 species with beautiful coloured photographs that are representative of the species. Under each photo there are detailed descriptions of characteristics used in identification. There are about 850 species mentioned in the book often in conjunction with those of similar appearance. Also, throughout the book there are featured vignettes on engrossing topics including: Death Caps Arrive in BC, Zombie Ants and Other Horrors, Hot, Dry and Lovin'it, First Nations and Fungi, and Various Plant Rusts, to name a few.

For your added enjoyment there are meanings given to some of the colourful Latin names that are also used in plant descriptions, did you know that 'tomentose' means covered with soft hairs? The genus name *Lactarius* notes that these fungi exude a 'milk' or latex when the gills are cut and the colour of the latex can denote the name to the species; for example, *Lactarius rubrilacteus* has red milk. And of course, *Lactarius deliciosus* is delicious! So much to enjoy in this guide. The first printing sold out but a second printing has now been delivered to book-stores.

It can also be ordered from the Royal BC Museum: www.rbcm.ca/mushrooms

Cypress Provincial Park Lies Within Canada's 19th UNESCO Biosphere Region

On September 15, 2021 Átl'ka7tsem/Howe Sound Region Initiative Society announced that **Howe Sound** was had been accorded recognition as a **Unesco Biosphere Reserve**.

Anne M. George

UNESCO Biosphere Regions are international designations for areas of ecological significance, requiring not only geographic significance but also communities of people who commit to ongoing implementation of best practices for conservation of biodiversity and sustainable development. Communities commit to inspiring people to live and work in harmony with nature. The region's designation should encourage scientific research, educational and recreational opportunities, as well as promote Indigenous cultural significance and an understanding of the biodiversity of wildlife and wilderness.

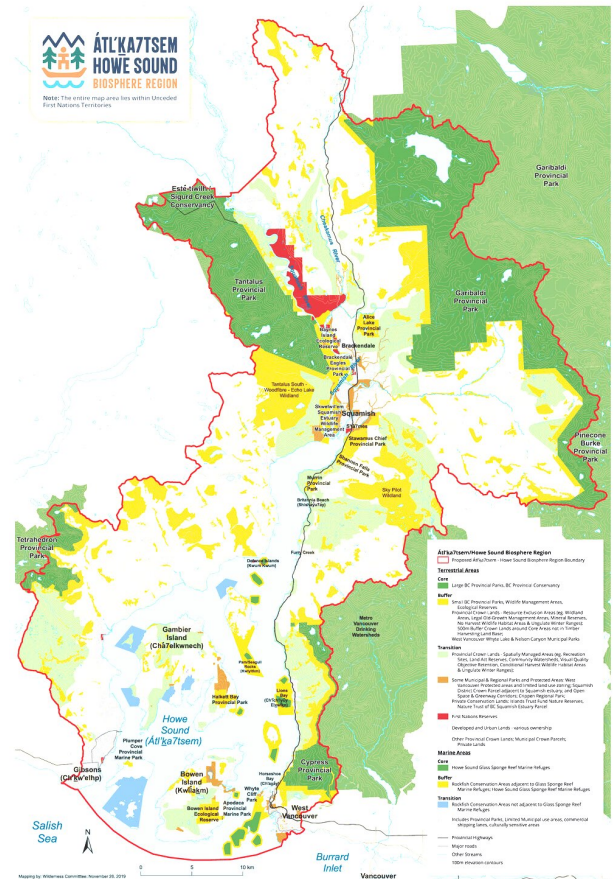
Numerous communities worked towards acquiring the designation including First Nations (Skwxwú7mesh Úxwumixw), all levels of government NGOs, various industry sectors, scientists, post-secondary institutions, and citizens.

The International Coordinating Council for Man and Biosphere Programme (MAB-ICC) recognized Átl'ka7tsem/Howe Sound as an area renowned for its rich indigenous culture, biodiversity and distinct geography. "As jurisdictions around the globe face the profound impacts of habitat loss and climate change, the Átl'ka7tsem/Howe Sound Biosphere Region (AHSBR) is an international showcase for how regional coordination can create a place for humanity and nature to thrive".

"Átl'ka7tsem is really about beauty and hope, as much as it is about sustainable development." Joyce Williams, Skwxwú7mesh Úxwumixw Councillor and Co-Chair of Howe Sound Biosphere Region Initiative Society Board, September 15, 2021.

The UNESCO Biosphere Region is a 218,723-hectare area of both land and sea. The protected area crosses 5 BC provincial parks including Cypress Provincial Park, a provincial conservancy area and numerous marine refuges. It covers land, with mountains developed by ancient glaciers from the last Ice Age and prehistoric volcanoes, and water where citizen scientists recently discovered fragile glass sponge reefs which were thought to be extinct and animals that play important roles in environmental sustainability.

It is the only existing framework for conservation and sustainable development encompassing the entire Átl'ka7tsem/Howe Sound watershed, finding local solutions to global environmental challenges.



Walks and Hikes in Association with Nature Vancouver

All leaders are both FCPP and Nature Vancouver members. While most of the hikes offered are within the park, some are in surrounding areas where natural features are similar in some instances, and in others quite different - leading to interesting observations and discussions. All of the hikes listed are offered to Friends of Cypress members and to members of Nature Vancouver. Exercising caution in this time of COVID, Nature Vancouver is limiting the numbers of people on any one hike to 10, and Nature Vancouver recommends that you carpool with caution.

To ensure you have a place on the hike you wish to join, please notify the hike leader as soon as possible before she/he puts it on the Nature Vancouver message board. Otherwise you may not secure a place.

Difficulty ratings can be found on the following Nature Vancouver link: www.naturevancouver.ca/events/field_trips.

Monday March 21 Yew Lake to Bowen Lookout

Leaders: Janet Snell & Lyn Grants
Meet at Black Mtn. Lodge 10:00 am
4.3k return, 110 m elevation gain, moderate terrain.
Nature Vancouver rating C3.

Contact Lyn at lmgrants@gmail.com and to discuss **parking** options at Cypress during the ski season.

Wednesday March 23 Arbutus Ridge to Whyte Lake

Leader: Anne Leathem
Meet at Whyte Lake Parking Lot 9:30 am. Parking Lot can be crowded so carpool if possible.
Approx. 6 km, 300 m elevation gain.
Moderate, some steep sections.
Nature Vancouver rating B Strenuous
This interesting hike begins by a switch back section up a rocky bluff to a wonderful viewpoint in an Arbutus menziesii and Arctostaphylos columbiana grove. We'll climb further in Arbutus woods along rocky bluffs, then up to a trail going east along a power line to reach an old helipad.
Then we proceed into mixed forest near seasonal ponds and up to a highpoint for lunch. A narrow rocky trail leads us down to an old road that takes us to Whyte Lake. We'll walk along a boardwalk by the lake to take a rest. The hike back is along the well-established Whyte Lake and Nelson Creeks back to the parking lot.
Contact Anne at anneleathem07@gmail.com

Friday April 1 Whyte Lake to Cypress Provincial Park Boundary Sign on Baden Powell Trail

Leaders: Jane Srivastava & Lyn Grants
Meet at Whyte Lake Parking Lot 9:30 am. Parking Lot can be crowded so carpool if possible.
Approx. 8 km, 350 m elevation gain.
Nature Vancouver rating B Strenuous.
We take the hike up the standard trail to and around the Lake and then head north on a forested trail to join the Baden Powell trail that starts above Horseshoe Bay. We stay on the Baden Powell, steep and rocky at times, until we come to a provincial park sign indicating Cypress Provincial Park boundary. We will make frequent stops to look at ferns, trees, mossy rock walls and other interesting things that might catch our eyes. The area is in great contrast to the more open and differently vegetated area of the hike offered March 23.
Contact Jane at Janejs@shaw.ca

Thursday April 14 Black Mountain Loop Trail

Leaders: Carol Ensor & Lyn Grants

Meet at Black Mountain Lodge at 10:00 am.

(Ski season closing date is listed as April 13. If the ski season is extended please phone Lyn Grants 604 980 9050 for information about parking).

6 km, 363 m elevation gain.

Nature Vancouver rating C Strenuous.

Pace will be slow to moderate up the steep Baden Powell Trail to Cabin Lake.

Many view opportunities en route.

Leisurely stop at Cabin Lake before we move onto Black Mountain with views to the Lions and into the inlet.

We then follow the loop trail back to the Baden Powell and back down to Parking Lot.

Contact Carol at carolensor@shaw.ca

Monday April 18 Quarry Lookout to Old Growth

Leaders Marshall Bauman & Smita Patel

Meet at Quarry Lookout on Cypress Bowl Road at 9:30

Leisurely walk through outstanding Old Growth Forest

(Suitable for BIG TREE FANS &/or Old Growth Forest Bathers).

Distance will be determined based on conditions and frequent stops to enjoy the surroundings

Approximate elevation gain 200 m

Contact Marshall at foxhole@telus.net

Saturday April 23 Blue Gentian Lake Loop

Leaders Diane Fast & Lyn Grants

Meet at Hollyburn Nordic Area BC Parks Kiosk at 10:00 am

Leisurely 4 hr, 3.2 km hike to still snow covered Blue Gentian Lake.

Nature Vancouver rating B Moderate.

Return by West Lake.

Snow covered trails. Dress warmly and wear good winter boots. Bring poles.

We will look for evidence of approaching spring, listen and look for birds.

Return via West Lake. Contact Lyn at lmgrants@gmail.com

FCPP Directors

President: AlexWallace

Vice President : Anne George

Secretary: Anne Leathem

Treasurer: Sandy Booth

Directors at Large: Marshall Bauman, Bill Kinkaid, Gail Ross, Eva Nagy, Lyn Grants

Contact us at info AT cypresspark.ca.

Renewing Your Membership

Your \$10 FCPP membership is for a one year period. If you wish to check your membership status for renewal, please contact membership secretary Eva Nagy at 604 929- 4286

Please clip and mail the membership form below. FCPP Directors greatly appreciate your support of the work our Society does to enhance and protect Cypress Provincial Park.
THANK YOU!

For membership in Friends of Cypress Provincial Park mail to:

Friends of Cypress Provincial Park Society, Membership

P.O. Box 91053

West Vancouver, BC V7V 3N3

Date : _____

Name (s) _____

Address _____

City and Postal Code

Telephone _____

E-Mail _____ New Member _____ Renewal _____

Enclosed is \$10 for single/family membership.

\$ _____ is added as a tax deductible donation.

Total Enclosed is \$ _____

(Charity BN/Registration) ##892492372RR0001

THANK YOU FOR YOUR SUPPORT